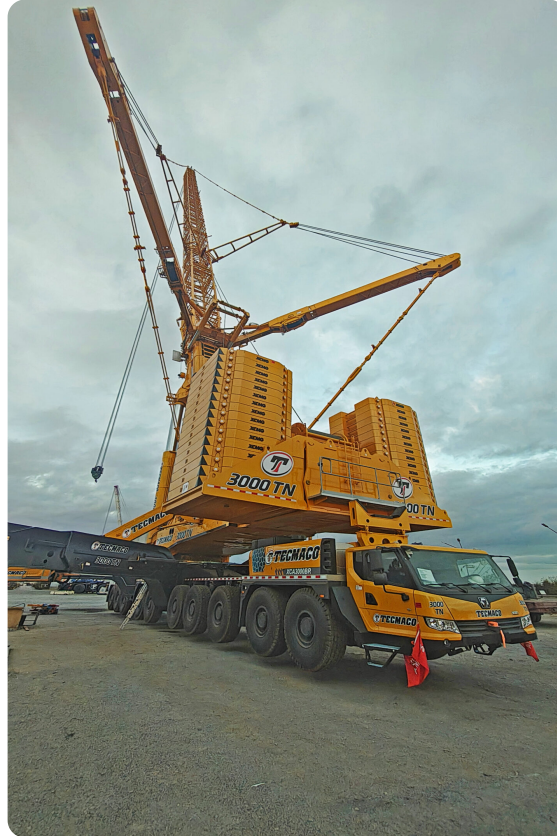


GRÚAS AT

XCMG XCA 3000BR

XCM011



ESPECIFICACIONES

| | |
|--------------|----------|
| Año: | 2026 |
| Capacidad: | 3000 Ton |
| Largo Pluma: | 68 Mts |
| Superlift: | 1 |
| Luffing Jib: | 1 |
| Wind Mill: | 1 |



GRÚAS AT

XCMG XCA 3000BR

XCM011

DESCRIPCIÓN

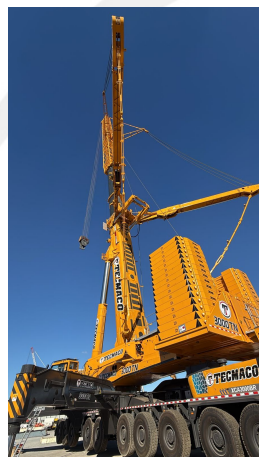
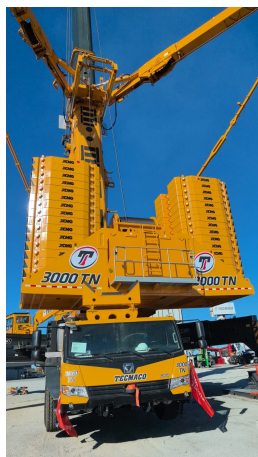
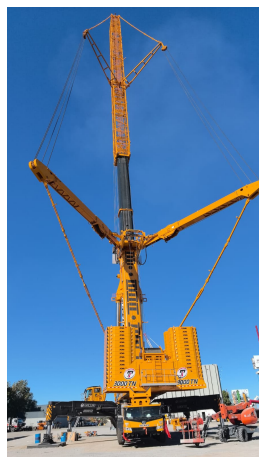
Capacidad: 3000 tons

Largo de Pluma: 68 mts

Jib Wind Mill: 150 mts

Pluma Total Wind Jib: 218 mts

IMÁGENES



GRÚAS AT

XCMG XCA 3000BR

XCM011

COMERCIAL ESPECIALIZADO: VENTAS



NORBERTO DELARI

Gerente de Ventas

 +5491179017010

