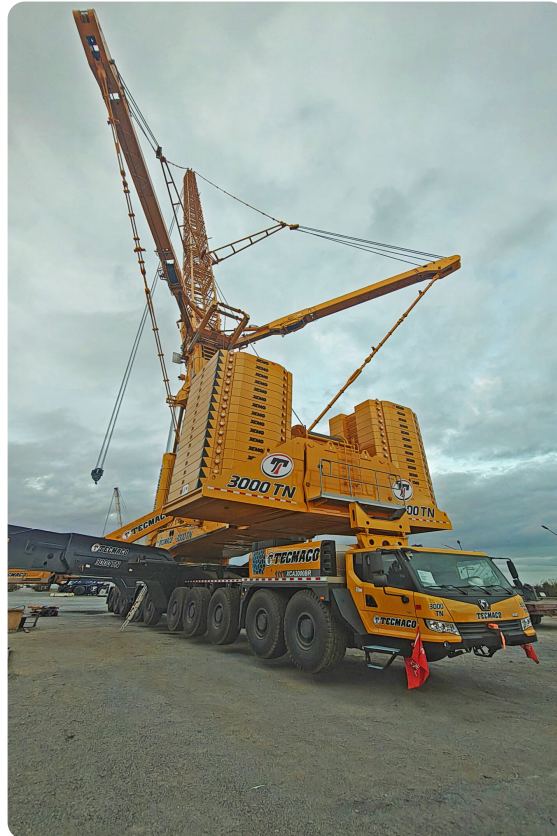


**GRÚAS AT****XCMG XCA 3000BR**

XCM011

**ESPECIFICACIONES**

Año:	2026
Capacidad:	3000 Ton
Largo Pluma:	68 Mts
Superlift:	1
Luffing Jib:	1
Wind Mill:	1



**GRÚAS AT**

**XCMG XCA 3000BR**

XCM011

**DESCRIPCIÓN**

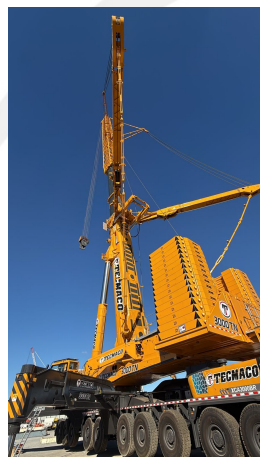
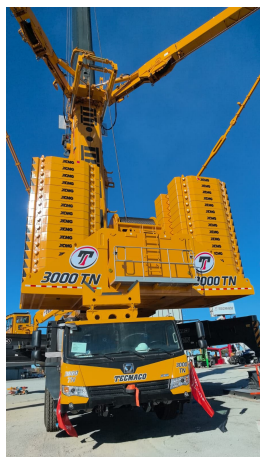
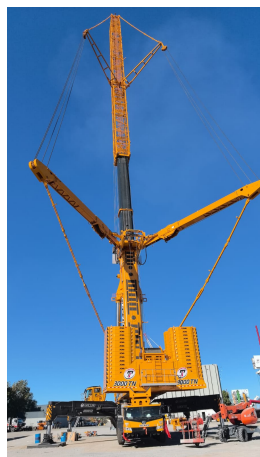
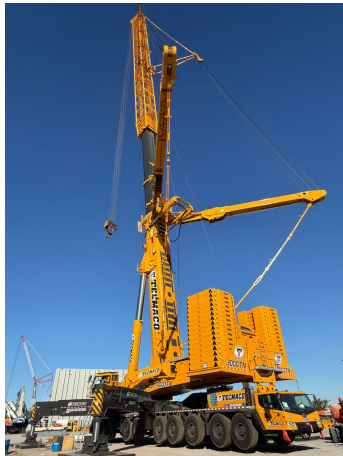
Capacidad: 3000 tons

Largo de Pluma: 68 mts

Jib Wind Mill: 150 mts

Pluma Total Wind Jib: 218 mts

**IMÁGENES**



GRÚAS AT

XCMG XCA 3000BR


XCM011

COMERCIAL ESPECIALIZADO



**IGNACIO POÑATOVSKY**

Gerente Alquileres

 +5491157192702



**PEDRO HERNÁNDEZ**

Gerente Alquileres

 +5491152282942

